

UNLESS OTHERWISE SPECIFIED DIMENSIONS WITHOUT TOLERANCES ARE REFERENCE ONLY

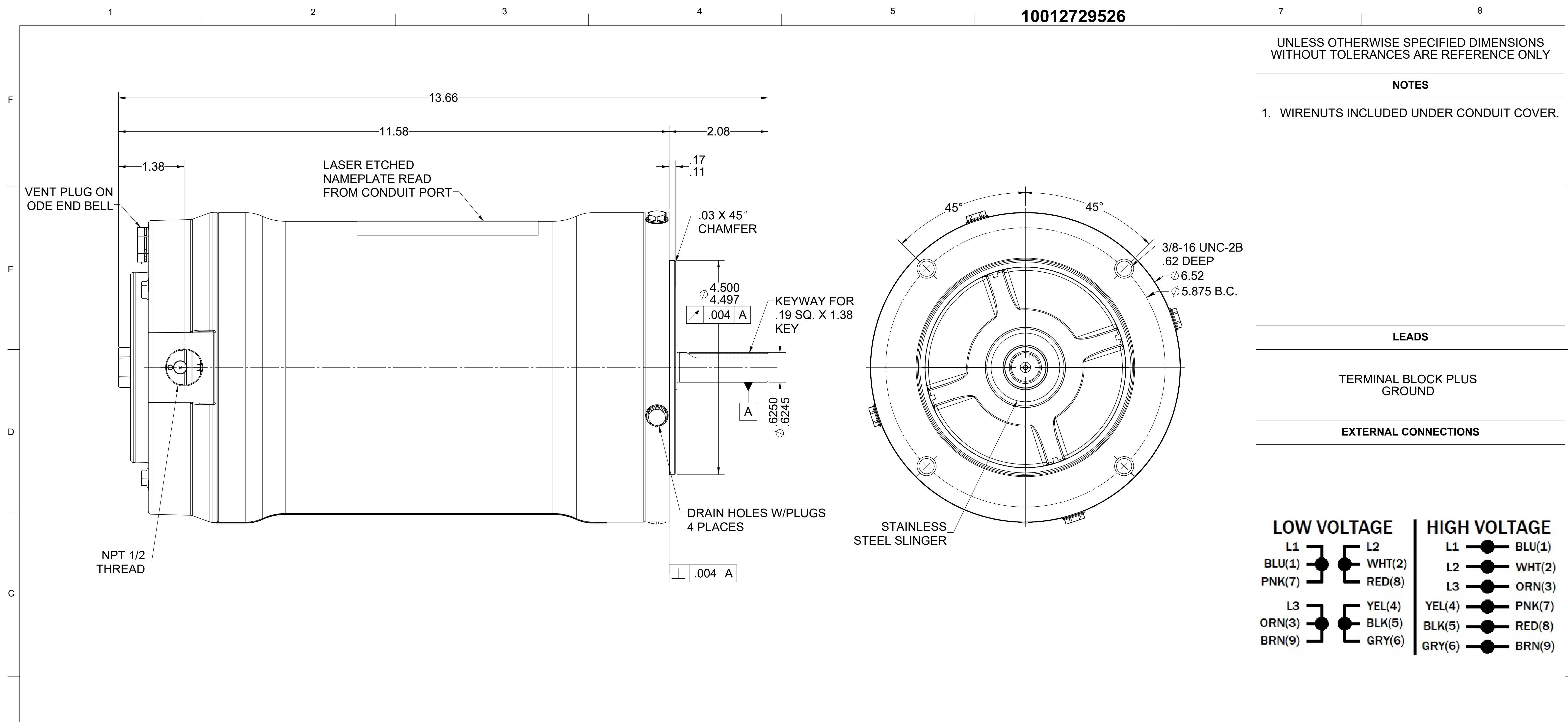
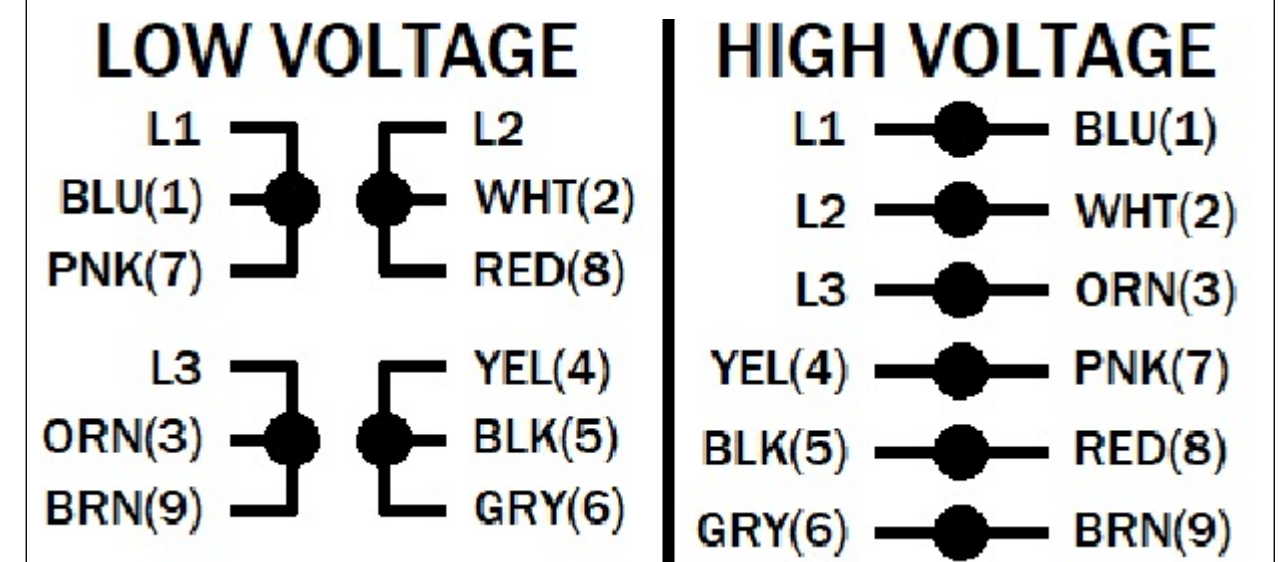
NOTES

- 1. WIRENUTS INCLUDED UNDER CONDUIT COVER.

LEADS

TERMINAL BLOCK PLUS GROUND

EXTERNAL CONNECTIONS



MOTOR DATA

TYPE POLY - INVERTER DUTY		SHAFT MATERIAL 303 S.S. EXTENSION		CUSTOMER NAME WEG HYDRODUTY	
HZ 60	HZ 50	FRAME 56C	PHASE 3	CUSTOMER PART NUMBER .7518NT3EHD56CFL	
VOLTS 230/460	VOLTS 190/380	ENCLOSURE TENV	PAINT NONE	VIEWING LEAD END	MOTOR ROTATION REV
HP[kW] 0.75 []	SF 1.0	Hp[kW] 0.5 [0.373]	SF 1.0	ENVIRONMENT WASHDOWN	BEARINGS BALL
RPM 1750	RPM 1460	I.P.CODE IP69K	END CAP N/R	ASSEMBLY VOLTAGE HIGH	
F.L. AMPS 2.5/1.25	F.L. AMPS 2.27/1.13	NEMA NOM. EFF. %	IE2 72.7%	THERMAL PROTECTION TYPE NONE	
S.F. AMPS -	S.F. AMPS -			MOUNTING POSITION ALL POSITIONS	
TIME RATE CONT		MAX AMB 40		WINDING AND TEST SPEC -	
KVA CODE P		INS CLASS F		DRAWN: DMILOSTAN 01/21/25	

ECN	REV 05	CHANGE DESCRIPTION REMOVE 208V RATING. ADDED 50HZ KW VALUE. ADDED IE2 AND EFFICIENCY VALUE.	DATE/INITIALS 09/27/2025 ZM
SIZE D		DWG NO. 10012729526	
SCALE: 1:1		DO NOT SCALE DRAWING	SHEET 1 OF 1

10012729526

