

UNLESS OTHERWISE SPECIFIED DIMENSIONS WITHOUT TOLERANCES ARE REFERENCE ONLY

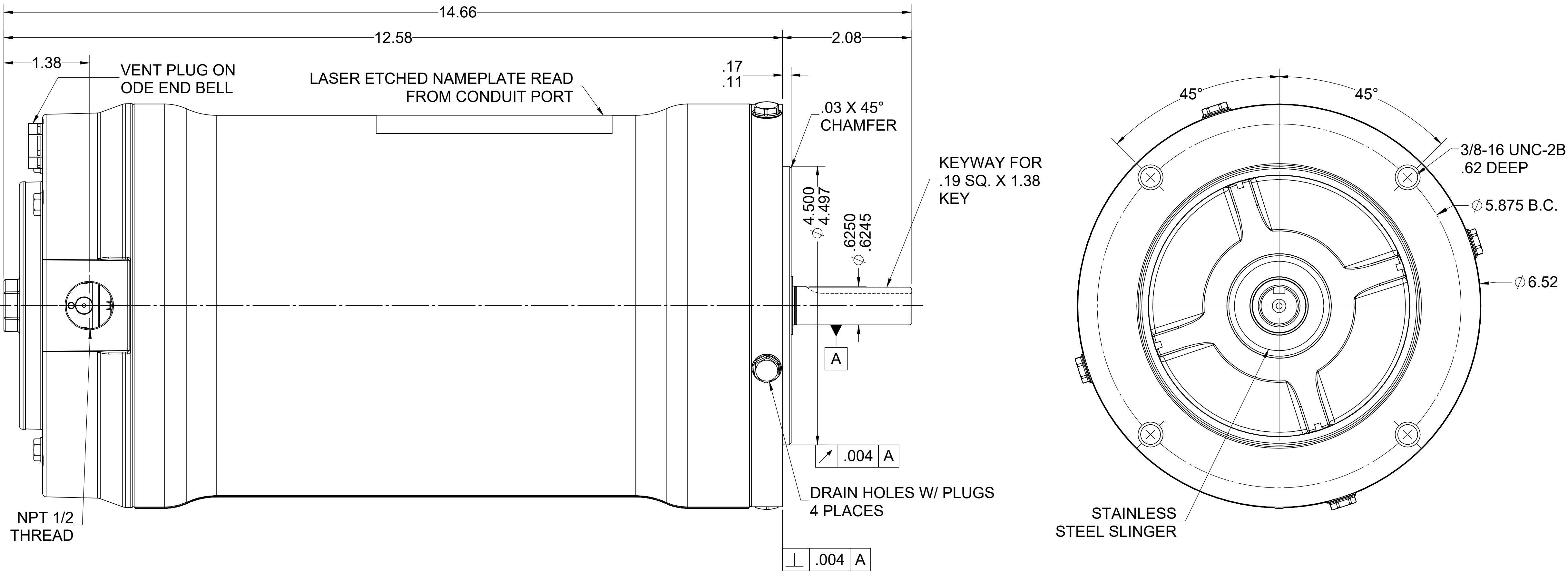
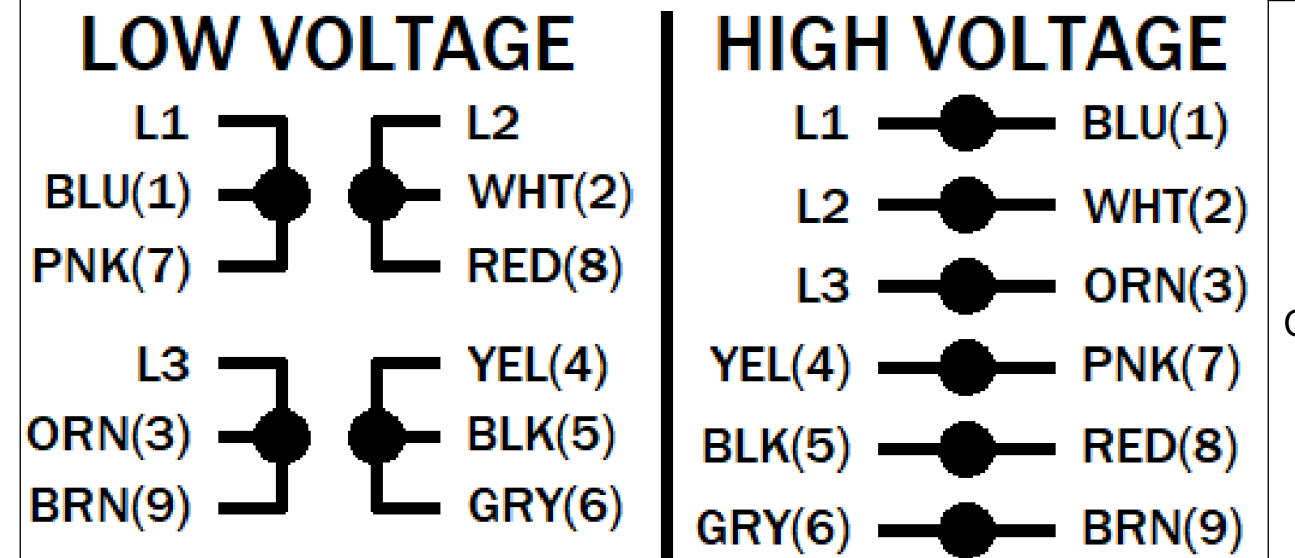
NOTES

1. WIRENUTS INCLUDED UNDER CONDUIT COVER.
2. MOTOR EQUIPPED WITH LOW TEMPERATURE BEARINGS.

LEADS


TERMINAL BLOCK PLUS GROUND

EXTERNAL CONNECTIONS



MOTOR DATA

TYPE POLY - INVERTER DUTY		SHAFT MATERIAL 303 S.S. EXTENSION		CUSTOMER NAME WEG HYDRODUTY	
HZ 60	HZ 50	FRAME 56C	PHASE 3	CUSTOMER PART NUMBER 00118NT3EHDLT56CFL	
VOLTS 230/460	VOLTS 190/380	ENCLOSURE TENV	PAINT NONE	VIEWING LEAD END	MOTOR ROTATION REV
HP[kW] 1.0 []	SF 1.00	Hp[kW] 0.75 [0.560]	SF 1.00	ENVIRONMENT WASHDOWN	BEARINGS BALL
RPM 1750	RPM 1460	I.P.CODE IP69K	END CAP N/R	ASSEMBLY VOLTAGE HIGH	
F.L. AMPS 3.1/1.55	F.L. AMPS 2.94/1.47	NEMA NOM. EFF. 85.5%	IE2 77.1%	THERMAL PROTECTION TYPE NONE	
S.F. AMPS -	S.F. AMPS -			MOUNTING POSITION ALL POSITIONS	
TIME RATE CONT	MAX AMB 40			WINDING AND TEST SPEC 338419	
KVA CODE N	INS CLASS F			DRAWN: ZMILOSTAN 01/27/25	

ECN	REV 03	CHANGE DESCRIPTION ADDED EFFICIENCY VALUES.	DATE/INITIALS 01/06/2026 ZM
<p>THE INFORMATION DISCLOSED HEREIN INCLUDES PROPRIETARY RIGHTS OF WEG. ANY REPRODUCTION OR TRANSFERRAL OF INFORMATION FROM THIS DOCUMENT IS FORBIDDEN WITHOUT PRIOR CONSENT.</p> 			
SIZE D	DWG NO. 10012729573		
SCALE: 1:1	DO NOT SCALE DRAWING	SHEET 1 OF 1	

10012729573