

UNLESS OTHERWISE SPECIFIED DIMENSIONS WITHOUT TOLERANCES ARE REFERENCE ONLY

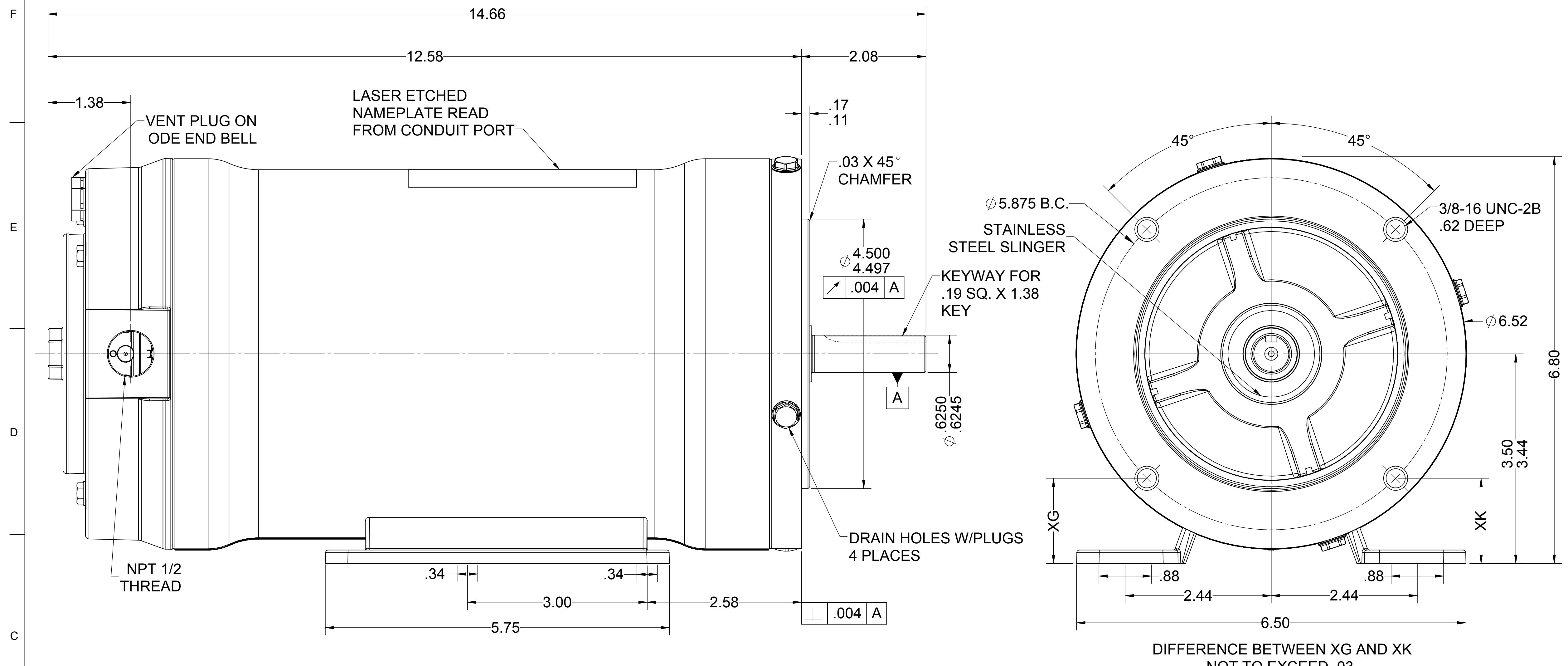
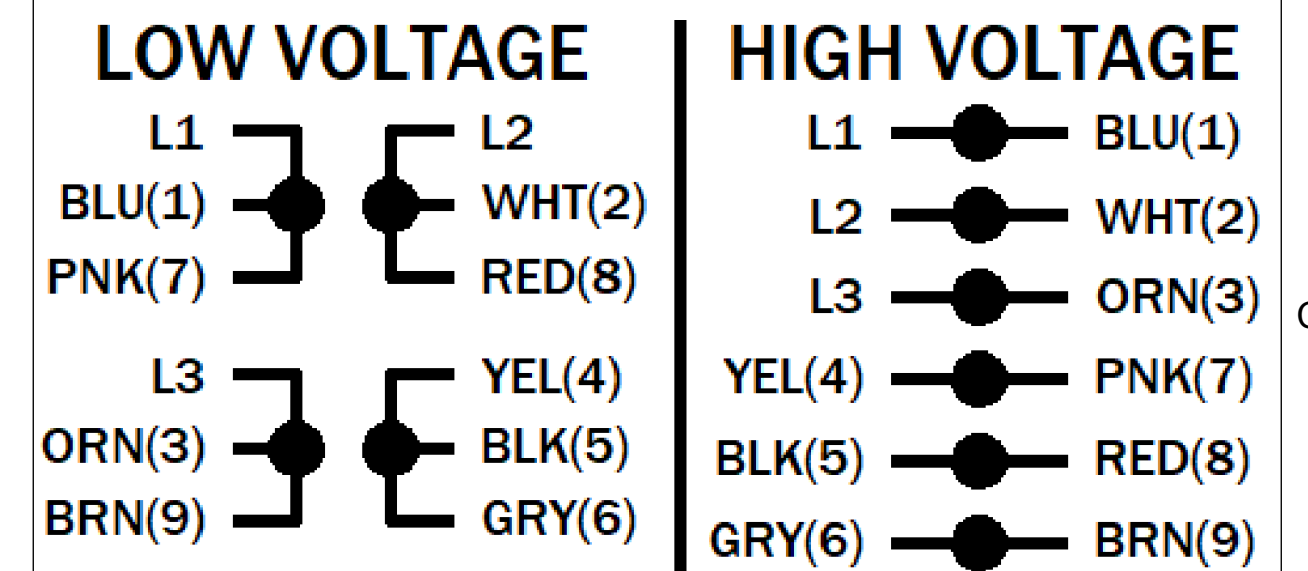
NOTES

1. WIRENUTS INCLUDED UNDER CONDUIT COVER.
2. MOTOR EQUIPPED WITH LOW TEMPERATURE BEARINGS.

LEADS

TERMINAL BLOCK PLUS GROUND

EXTERNAL CONNECTIONS



MOTOR DATA

TYPE		POLY - INVERTER DUTY		SHAFT MATERIAL		303 S.S. EXTENSION		CUSTOMER NAME		WEG HYDRODUTY	
HZ		60		HZ		50		FRAME		56C	
VOLTS		230/460		VOLTS		190/380		ENCLOSURE		TENV	
HP[kW]		1.0 []		SF		1.15		ENVIRONMENT		WASHDOWN	
RPM		1750		RPM		1460		I.P.CODE		IP69K	
F.L. AMPS		3.1/1.55		F.L. AMPS		2.94/1.47		NEMA NOM. EFF.		85.5%	
S.F. AMPS		3.36/1.68		S.F. AMPS		-		END CAP		N/R	
TIME RATE		CONT		MAX AMB		40		BEARINGS		BALL	
KVA CODE		N		INS CLASS		F		ASSEMBLY VOLTAGE		HIGH	
								THERMAL PROTECTION TYPE		NONE	
								MOUNTING POSITION		ALL POSITIONS	
								WINDING AND TEST SPEC		338419	
								DRAWN: AZAHM		02/10/25	

ECN	REV	CHANGE DESCRIPTION	DATE/INITIALS
	04	ADDED SF AND SFA FOR 60HZ.	08/05/2025 ZM
THE INFORMATION DISCLOSED HEREIN INCLUDES PROPRIETARY RIGHTS OF WEG. ANY REPRODUCTION OR TRANSFERRAL OF INFORMATION FROM THIS DOCUMENT IS FORBIDDEN WITHOUT PRIOR CONSENT.			
SIZE	DWG NO.		
D	10012729588		
SCALE: 1:1	DO NOT SCALE DRAWING	SHEET 1 OF 1	

10012729588