

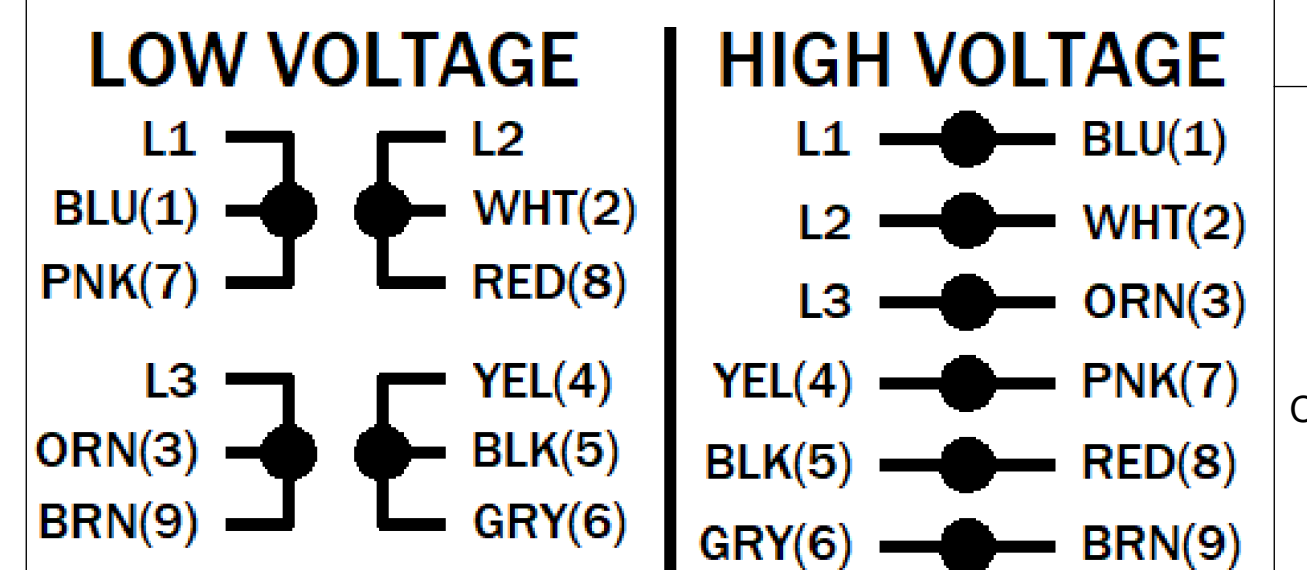
UNLESS OTHERWISE SPECIFIED DIMENSIONS WITHOUT TOLERANCES ARE REFERENCE ONLY

NOTES

LEADS

TERMINAL BLOCK PLUS GROUND

EXTERNAL CONNECTIONS



MOTOR DATA

TYPE		POLY - INVERTER DUTY		SHAFT MATERIAL		304 S.S. EXTENSION		CUSTOMER NAME		WEG HYDRODUTY	
HZ		60		HZ		50		FRAME		56C	
VOLTS		230/460		VOLTS		190/380		ENCLOSURE		TEFC	
HP[kW]		1.5 [-]		SF		1.15		ENVIRONMENT		WASHDOWN	
RPM		1750		RPM		1460		I.P.CODE		IP69K	
F.L. AMPS		4.26/2.13		F.L. AMPS		4.14/2.07		NEMA NOM. EFF.		86.5%	
S.F. AMPS		4.8/2.4		S.F. AMPS		-		IE3		82.5%	
TIME RATE		CONT		MAX AMB		40		ASSEMBLY VOLTAGE		HIGH	
KVA CODE		N		INS CLASS		F		THERMAL PROTECTION TYPE		NONE	
								MOUNTING POSITION		ALL POSITIONS	
								WINDING AND TEST SPEC		-	
								DRAWN: DMILOSTAN		12/16/24	

ECN	REV	CHANGE DESCRIPTION	DATE/INITIALS
	03	UPDATE IE3 EFFICIENCY.	08/13/2025 ZM
THE INFORMATION DISCLOSED HEREIN INCLUDES PROPRIETARY RIGHTS OF WEG. ANY REPRODUCTION OR TRANSFERRAL OF INFORMATION FROM THIS DOCUMENT IS FORBIDDEN WITHOUT PRIOR CONSENT.			
SIZE	DWG NO.		
D	10012729638		
SCALE: 3:4	DO NOT SCALE DRAWING	SHEET 1 OF 2	

F
E
D
C
B
A

F
E
D
C
B
A

10012729638

1 2 3 4 5 6 7 8

