

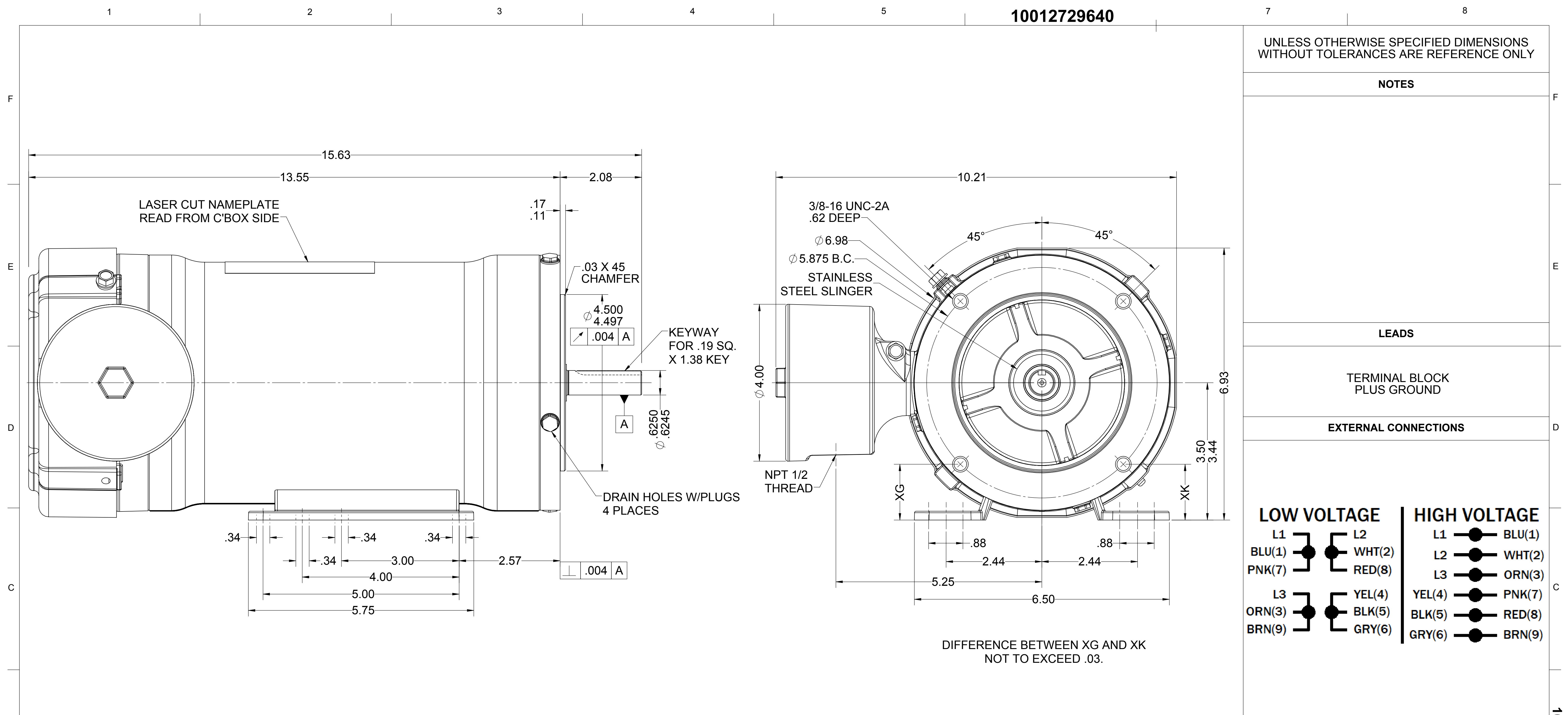
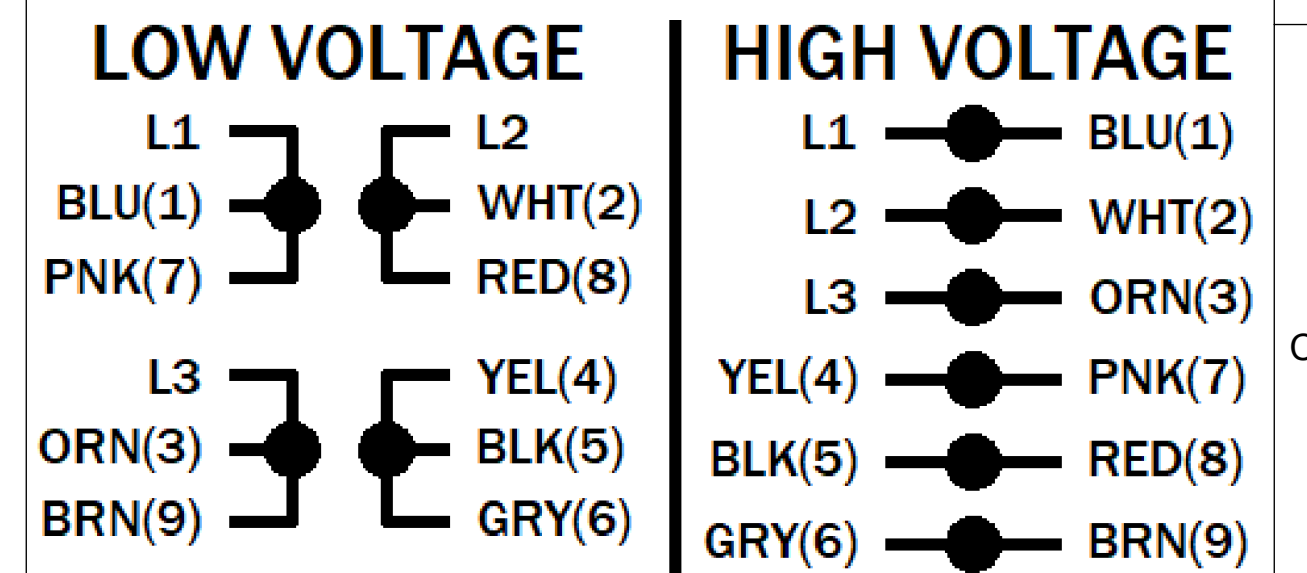
UNLESS OTHERWISE SPECIFIED DIMENSIONS WITHOUT TOLERANCES ARE REFERENCE ONLY

NOTES

LEADS

TERMINAL BLOCK PLUS GROUND

EXTERNAL CONNECTIONS



DIFFERENCE BETWEEN XG AND XK NOT TO EXCEED .03.

MOTOR DATA

TYPE POLY - INVERTER DUTY		SHAFT MATERIAL 304 S.S. EXTENSION		CUSTOMER NAME WEG HYDRODUTY	
HZ 60	HZ 50	FRAME 56C	PHASE 3	CUSTOMER PART NUMBER 00158ET3EHD56C	
VOLTS 230/460	VOLTS 190/380	ENCLOSURE TEFC	PAINT NONE	VIEWING LEAD END	MOTOR ROTATION REV
HP[kW] 1.5 [-]	SF 1.15	HP[kW] 1.0 [0.746]	SF 1.0	ENVIRONMENT WASHDOWN	BEARINGS BALL
RPM 1750	RPM 1460	I.P.CODE IP69K	END CAP N/R	ASSEMBLY VOLTAGE HIGH	
F.L. AMPS 4.26/2.13	F.L. AMPS 4.14/2.07	NEMA NOM. EFF. 86.5%	IE3 82.5%	THERMAL PROTECTION TYPE NONE	
S.F. AMPS 4.8/2.4	S.F. AMPS -			MOUNTING POSITION ALL POSITIONS	
TIME RATE CONT	MAX AMB 40			WINDING AND TEST SPEC -	
KVA CODE N	INS CLASS F			DRAWN: DMILOSTAN 12/16/24	

ECN	REV	CHANGE DESCRIPTION	DATE/INITIALS
	02	ADDED KW VALUE FOR 50HZ AND CATALOG NUMBER. UPDATED IE EFFICIENCY, CONNECTION DIAGRAM AND ASSEMBLY ROTATION.	08/17/2025 ZM
THE INFORMATION DISCLOSED HEREIN INCLUDES PROPRIETARY RIGHTS OF WEG. ANY REPRODUCTION OR TRANSFERRAL OF INFORMATION FROM THIS DOCUMENT IS FORBIDDEN WITHOUT PRIOR CONSENT.			
SIZE	DWG NO.		
D	10012729640		
SCALE: 3:4	DO NOT SCALE DRAWING	SHEET 1 OF 2	

10012729640