

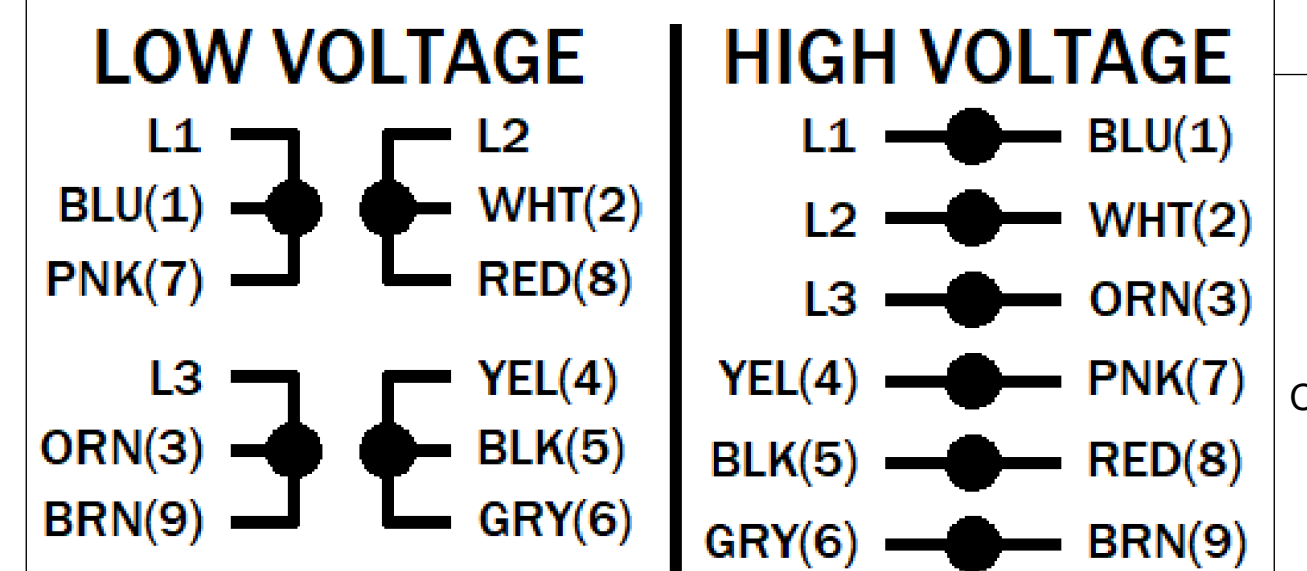
UNLESS OTHERWISE SPECIFIED DIMENSIONS WITHOUT TOLERANCES ARE REFERENCE ONLY

NOTES

LEADS

TERMINAL BLOCK PLUS GROUND

EXTERNAL CONNECTIONS



MOTOR DATA

<b>TYPE</b> POLY - INVERTER DUTY		<b>SHAFT MATERIAL</b> 304 S.S. EXTENSION		<b>CUSTOMER NAME</b> WEG HYDRODUTY	
<b>HZ</b> 60	<b>HZ</b> 50	<b>FRAME</b> 56C	<b>PHASE</b> 3	<b>CUSTOMER PART NUMBER</b> 00218ET3EHD56CFL	
<b>VOLTS</b> 230/460	<b>VOLTS</b> 190/380	<b>ENCLOSURE</b> TEFC	<b>PAINT</b> NONE	<b>VIEWING LEAD END</b>	<b>MOTOR ROTATION</b> REV
<b>HP[kW]</b> 2.0 [- ]	<b>SF</b> 1.15	<b>HP[kW]</b> 1.5 [1.119]	<b>SF</b> 1.00	<b>ENVIRONMENT</b> WASHDOWN	<b>BEARINGS</b> BALL
<b>RPM</b> 1730	<b>RPM</b> 1440	<b>I.P.CODE</b> IP69K	<b>END CAP</b> N/R	<b>ASSEMBLY VOLTAGE</b> HIGH	
<b>F.L. AMPS</b> 5.88/2.94	<b>F.L. AMPS</b> 5.52/2.76	<b>NEMA NOM. EFF.</b> 86.5%	<b>IE3</b> 84.1%	<b>THERMAL PROTECTION TYPE</b> NONE	
<b>S.F. AMPS</b> 6.9/3.45	<b>S.F. AMPS</b> -			<b>MOUNTING POSITION</b> ALL POSITIONS	
<b>TIME RATE</b> CONT	<b>MAX AMB</b> 40			<b>WINDING AND TEST SPEC</b> -	
<b>KVA CODE</b> L	<b>INS CLASS</b> F			<b>DRAWN: DMILOSTAN 12/18/24</b>	

<b>ECN</b>	<b>REV</b> 03	<b>CHANGE DESCRIPTION</b> UPDATED RPM, FLA, SFA, AND KVA CODE	<b>DATE/INITIALS</b> 06/13/2025 IT
THE INFORMATION DISCLOSED HEREIN INCLUDES PROPRIETARY RIGHTS OF WEG. ANY REPRODUCTION OR TRANSFERRAL OF INFORMATION FROM THIS DOCUMENT IS FORBIDDEN WITHOUT PRIOR CONSENT.			
<b>SIZE</b> D	<b>DWG NO.</b> 10012729642		
<b>SCALE:</b> 5:6	DO NOT SCALE DRAWING	SHEET 1 OF 2	

F  
E  
D  
C  
B  
A

F  
E  
D  
C  
B  
A

10012729642