

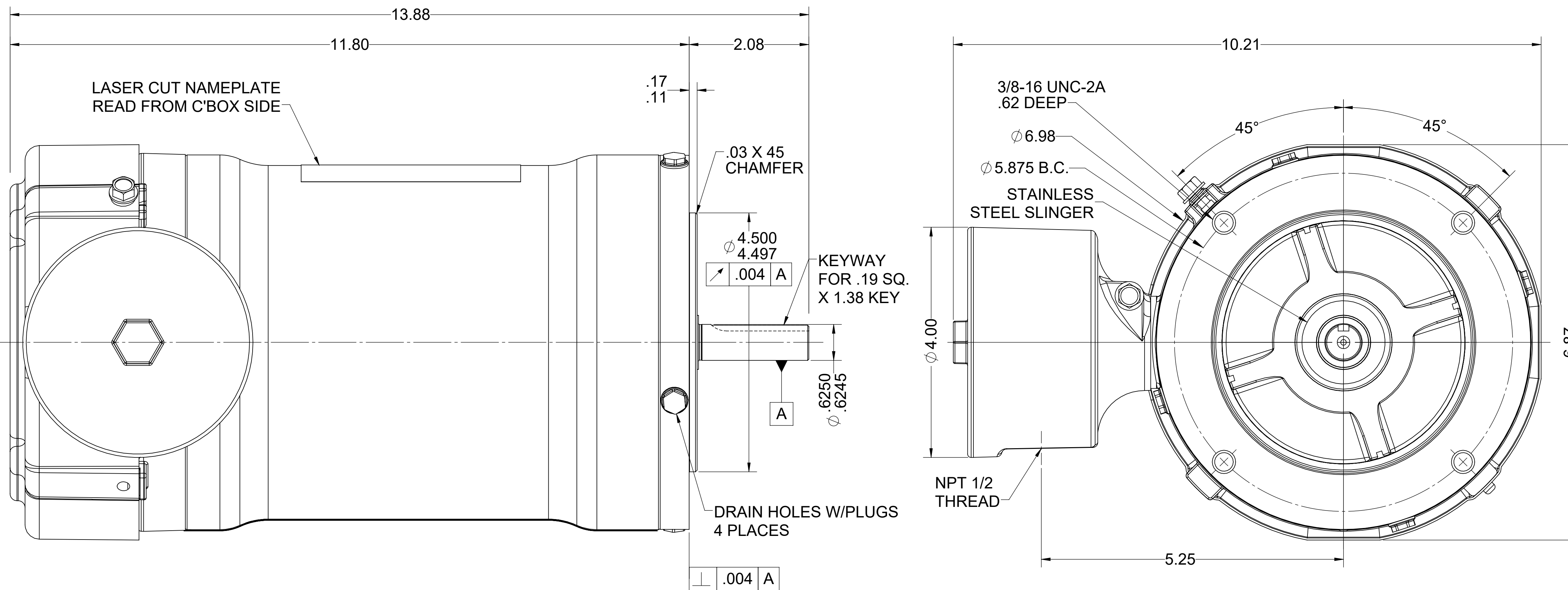
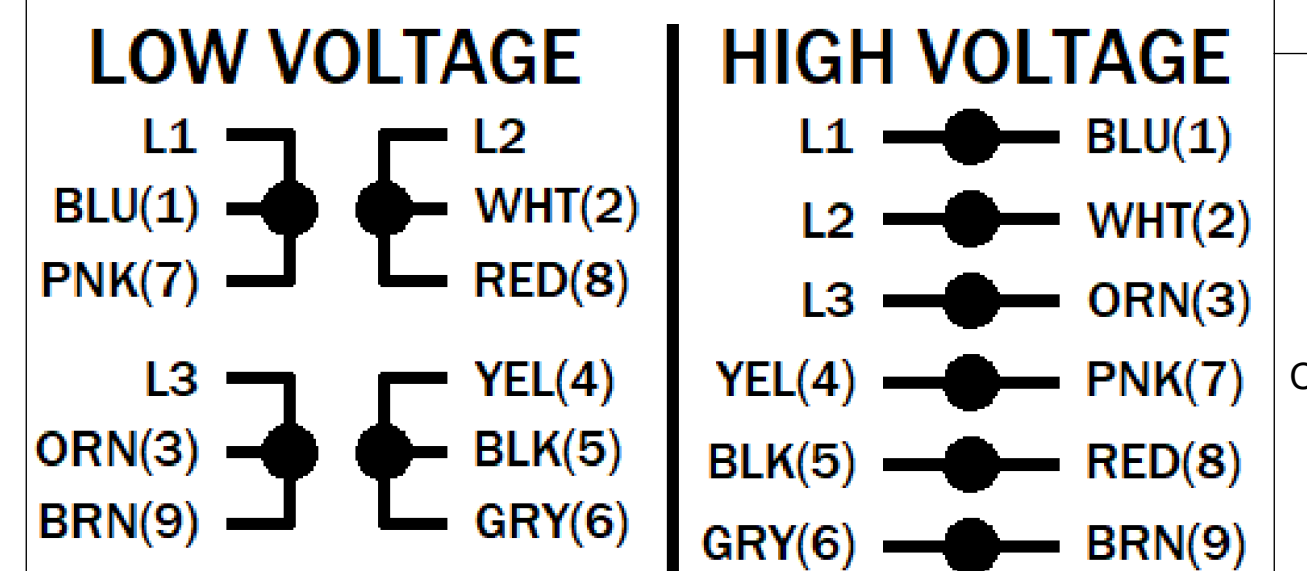
UNLESS OTHERWISE SPECIFIED DIMENSIONS WITHOUT TOLERANCES ARE REFERENCE ONLY

NOTES

LEADS

TERMINAL BLOCK PLUS GROUND

EXTERNAL CONNECTIONS



MOTOR DATA

TYPE		POLY - INVERTER DUTY		SHAFT MATERIAL		303 S.S. EXTENSION		CUSTOMER NAME		WEG HYDRODUTY	
HZ		60		HZ		50		FRAME		56C	
VOLTS		230/460		VOLTS		190/380		ENCLOSURE		TEFC	
HP[kW]		1.0 []		SF		1.15		ENVIRONMENT		WASHDOWN	
RPM		3480		RPM		2890		I.P.CODE		IP69K	
F.L. AMPS		3.13/1.57		F.L. AMPS		2.97/1.48		NEMA NOM. EFF.		77.0%	
S.F. AMPS		3.6/1.8		S.F. AMPS		-		END CAP		N/R	
TIME RATE		CONT		MAX AMB		40		WINDING AND TEST SPEC		-	
KVA CODE		N		INS CLASS		F		DRAWN: DMILOSTAN		12/18/24	

ECN	REV	CHANGE DESCRIPTION	DATE/INITIALS
-	04	ADDED IE CATEGORY AND EFFICIENCY.	02/10/2026 ZM
SIZE		DWG NO.	
D		10012729673	
SCALE: 3:4		DO NOT SCALE DRAWING	
SHEET 1 OF 2			

10012729673

