

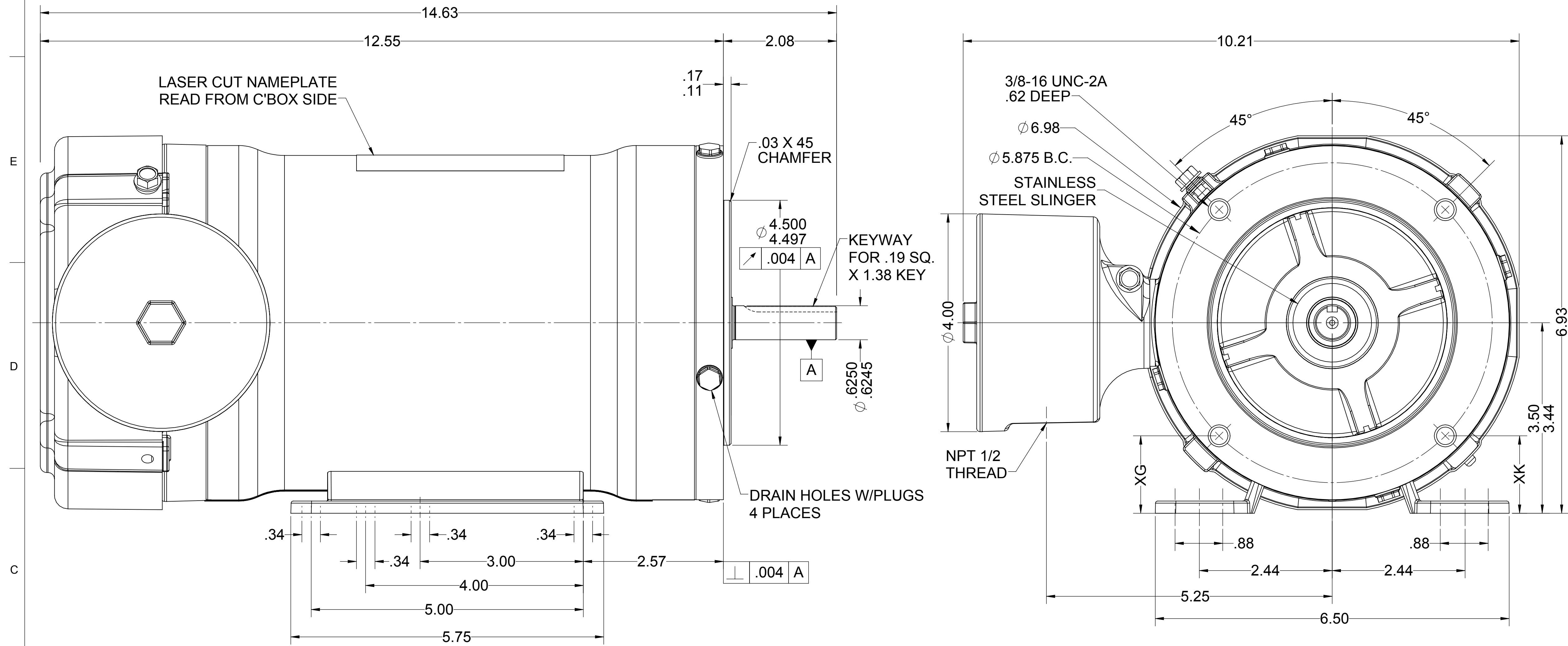
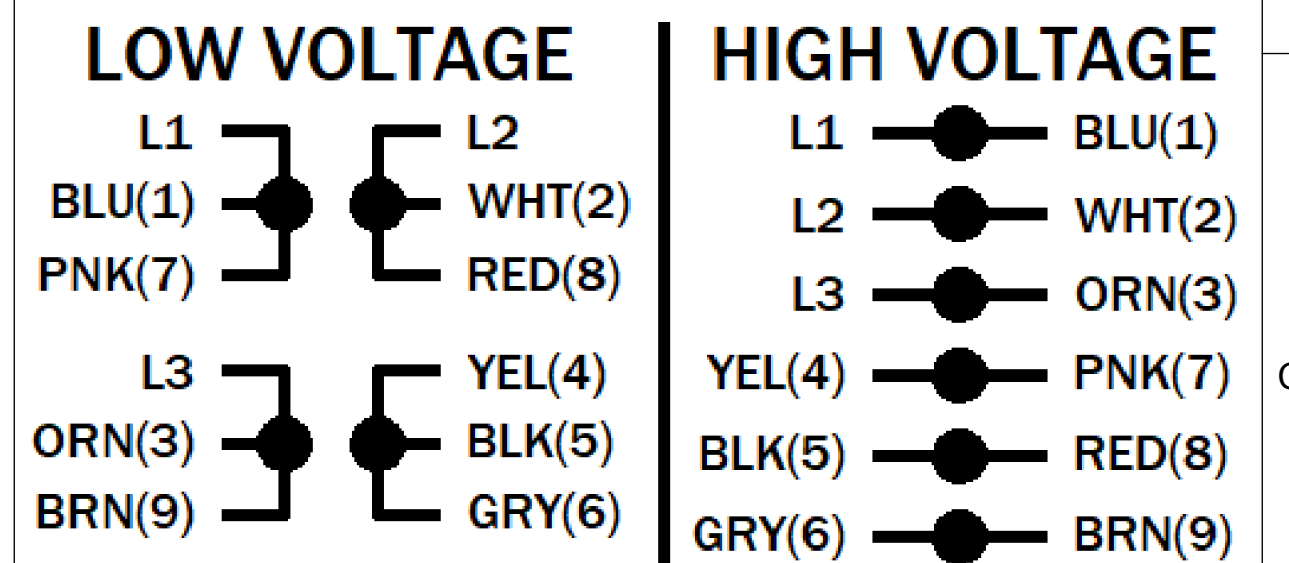
UNLESS OTHERWISE SPECIFIED DIMENSIONS WITHOUT TOLERANCES ARE REFERENCE ONLY

NOTES

LEADS

TERMINAL BLOCK PLUS GROUND

EXTERNAL CONNECTIONS



DIFFERENCE BETWEEN XG AND XK NOT TO EXCEED .03.

MOTOR DATA

TYPE		SHAFT MATERIAL		CUSTOMER NAME	
POLY - INVERTER DUTY		304 S.S. EXTENSION		WEG HYDRODUTY	
HZ	60	HZ	50	CUSTOMER PART NUMBER	00156ET3EHD56C
VOLTS	230/460	VOLTS	190/380	VIEWING LEAD END	MOTOR ROTATION REV
HP[kW]	1.5 [- ]	HP[kW]	1.0 [0.746]	ASSEMBLY ROTATION	CW
SF	1.15	SF	1.0	ASSEMBLY VOLTAGE	HIGH
RPM	3490	RPM	2910	THERMAL PROTECTION TYPE	NONE
F.L. AMPS	3.87/1.93	F.L. AMPS	3.39/1.69	MOUNTING POSITION	ALL POSITIONS
S.F. AMPS	4.4/2.2	S.F. AMPS	-	WINDING AND TEST SPEC	-
TIME RATE	CONT	MAX AMB	40	DRAWN:	DMILOSTAN 02/20/25
KVA CODE	M	INS CLASS	F		

ECN	REV	CHANGE DESCRIPTION	DATE/INITIALS
-	02	UPDATE TO IE3 AND CONNECTION DIAGRAM.	06/11/2025 ZM

THE INFORMATION DISCLOSED HEREIN INCLUDES PROPRIETARY RIGHTS OF WEG. ANY REPRODUCTION OR TRANSFERRAL OF INFORMATION FROM THIS DOCUMENT IS FORBIDDEN WITHOUT PRIOR CONSENT.

SIZE: **D**  
DWG NO.: **10012729676**

SCALE: 3:4 DO NOT SCALE DRAWING SHEET 1 OF 2

10012729676