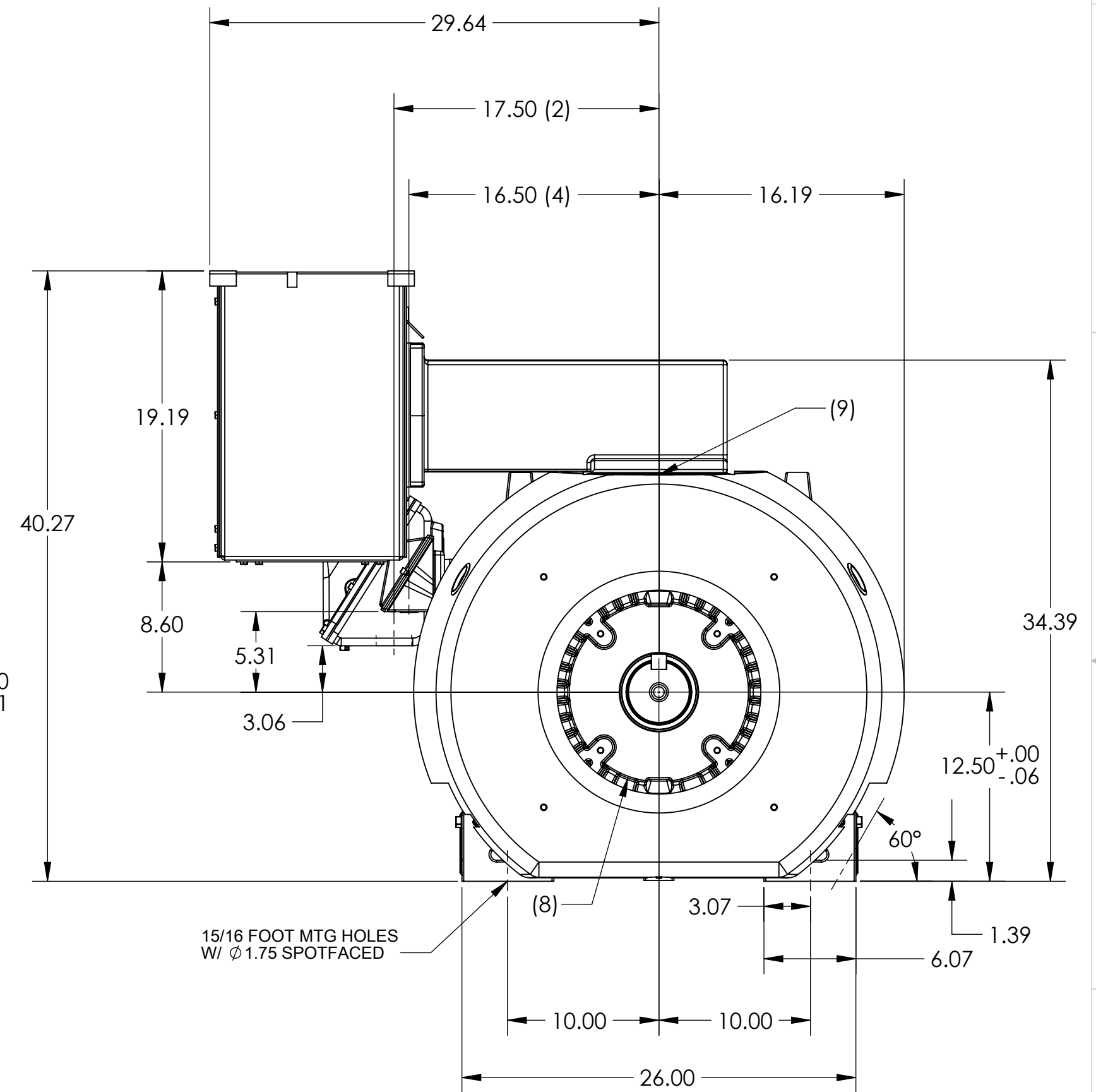
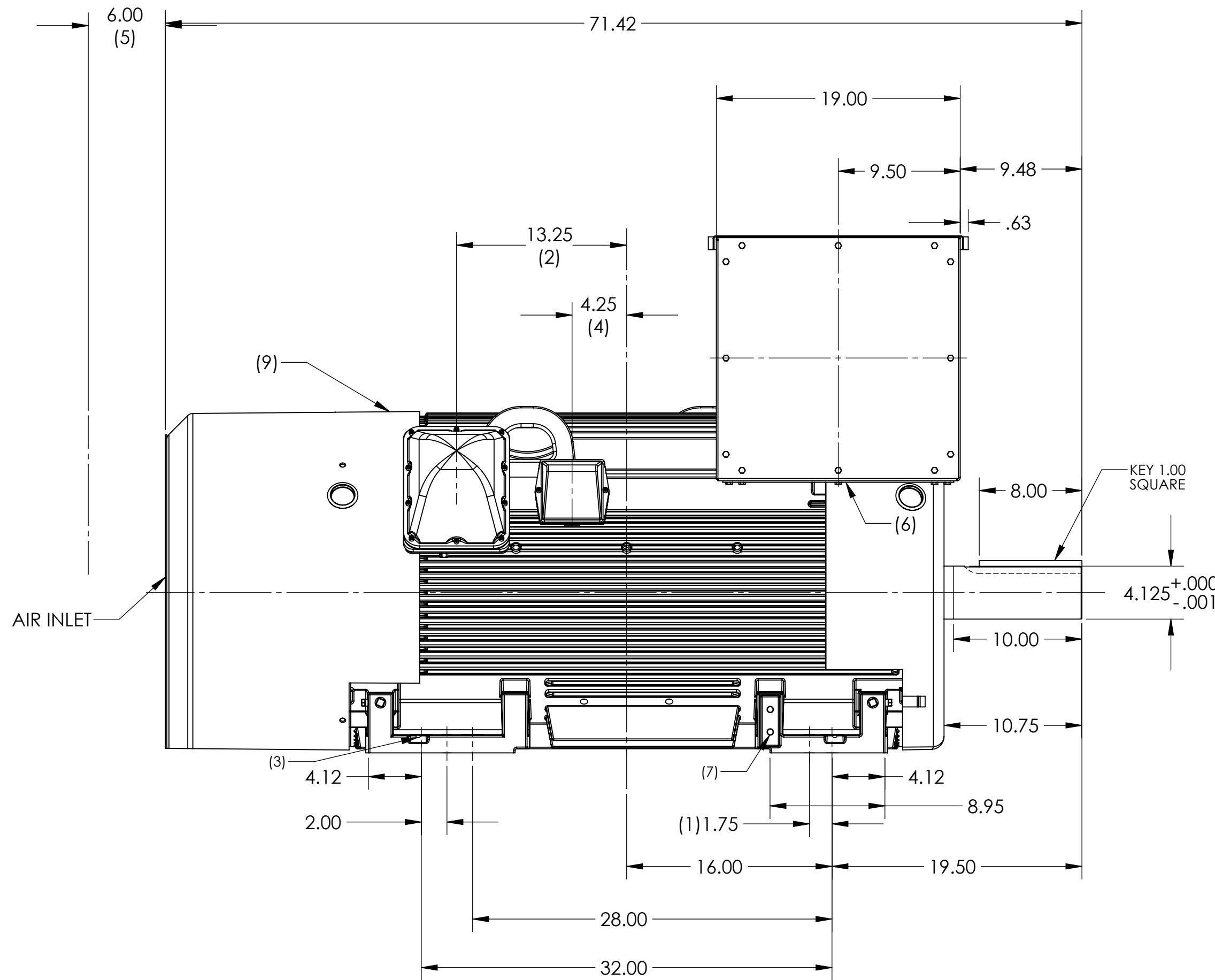


# GENERAL PURPOSE STOCK ALTERNATING CURRENT MOTORS

ENCLOSURE: TOTALLY ENCLOSED  
MOUNTING: FOOT

SQUIRREL-CAGE INDUCTION  
1800 RPM MAX  
FRAME G5010L  
(FIELD CONVERTIBLE COUPLE/BELT)  
INCLUDES G5009L FRAME MOUNTING HOLES

COOLING: FAN COOLED  
ANTI-FRICTION BEARINGS  
ENGLISH HARDWARE  
OVERSIZE MAIN CONDUIT BOX



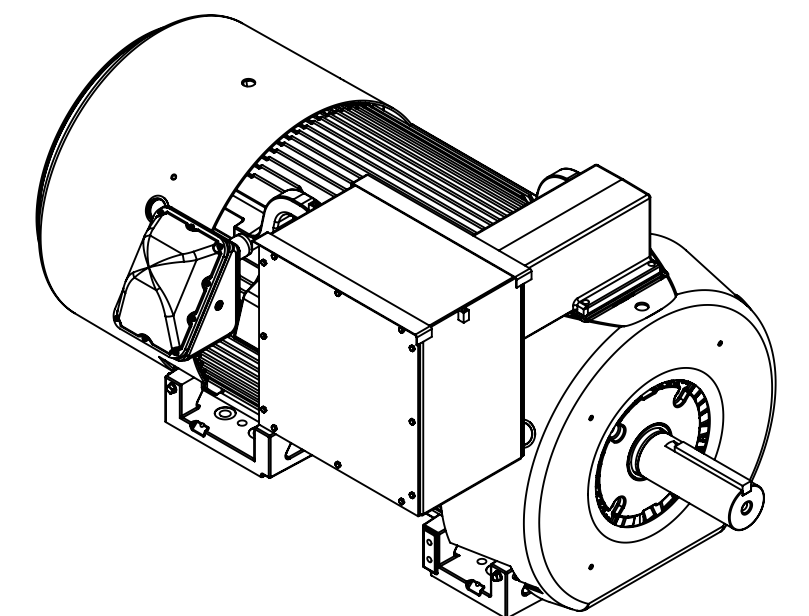
**NOTES:**

1. (4) 3/4-10 JACKSCREW HOLES
2. 2.0 NPT FOR WINDING TEMPERATURE DETECTOR LEADS
3. 11/32 DOWEL PIN PILOT HOLES, 1 HOLE EACH FOOT
4. 3/4 NPT FOR MOTOR SPACE HEATER LEADS
5. WALL OR OBSTRUCTION MUST NOT ENCROACH ON AIR INLET SPACE
6. CUSTOMER TO PROVIDE HOLE FOR MOTOR POWER LEADS
7. TWO GROUND PADS DIAGONALLY OPPOSITE EACH OTHER, TAPPED 1/2-13
8. 1/8 NPT PROVISIONS FOR BEARING TEMPERATURE DETECTOR LEADS.
9. GREASE POINT

CONDUIT BOX LOCATED ON OPPOSITE SIDE WHEN F-2.  
IF MOUNTING CLEARANCE DETAILS ARE REQUIRED, CONSULT FACTORY.  
MAXIMUM PERMISSIBLE SHAFT RUNOUT WHEN MEASURED AT END OF  
STANDARD SHAFT EXTENSION IS .003" T.I.R. TO 5 INCH DIA.

**WEIGHT (LBS): 5500 (MAXIMUM)**

DIMENSIONS ARE IN INCHES



**CATALOG #'S**

**M50454L-4**  
**M50504L-4**  
**M50404L - 2340**  
**M50454L - 2340**

CUSTOMER IS RESPONSIBLE FOR DETERMINING THAT BALDOR'S PRODUCT WILL PERFORM SUITABLY IN THE INTENDED APPLICATION

REV. DESC: ADD CATALOG NUMBERS TO DIMENSION SHEET			
REV: D	VERSION: - 04	REVISED: 01:55:26 04/22/2015	TDR: 000000910169
MODEL NO. 616159-804		REF: -	
BY: MGHPC		Material: -	

**BALDOR**

G5010L, TEFC, S/N, CPLD, 1800, A/F, F-1, 19X19X12, U=4.125, XBA=19.50