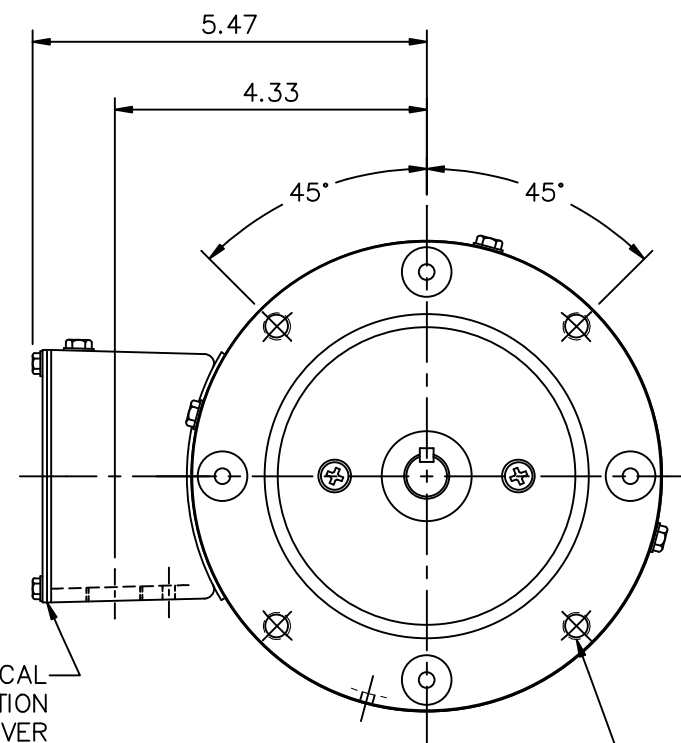


DECAL
CONNECTION
UNDER COVER
(WHEN REQ'D.)



SPECIAL FEATURES:

- 1) SHAFT SEALS & V-RING
- 2) DRAIN HOLES IN BOTH ENDBELLS & CONDUIT BOX
- 3) GASKETS THROUGHOUT
- 4) STAINLESS STEEL SHAFT, HARDWARE & NAMEPLATE

DASH NO.	"C"	"AD"
450	9.56	4.50
500	10.06	5.00
550	10.56	5.50
600	11.06	6.00
650	11.56	6.50
700	12.06	7.00
750	12.56	7.50
800	13.06	8.00

MAXIMUM FACE RUNOUT .004 T.I.R.
MAXIMUM PILOT ECCENTRICITY .004 T.I.R.
PERMISSIBLE SHAFT RUNOUT .002 T.I.R.

		TOLERANCES UNLESS SPECIFIED			DRAWN MGM 2/13/03	
		DEC.	INCHES		CHK	
		.X	±.1		APPD	
		.XX	±.03		SCALE 3=8	
		.XXX	±.005		REF 033694	
01	ADDED DRAIN DECAL PER ISAAC 11-1331	PG 05/03/11	.XXXX	±.0005	TITLE OUTLINE - 56C FRAME TENV - "C" FACE	
					MAT'L. WASHGUARD	
					FINISH	
					PREV	
					REV.	
					SIZE A	
					DRAWING NO. 034960-ME	

THIS DRAWING IN DESIGN AND DETAIL IS OUR PROPERTY AND MUST NOT BE USED EXCEPT IN CONNECTION WITH OUR WORK ALL RIGHTS OF DESIGN AND INVENTION ARE RESERVED
THIS IS AN ELECTRONICALLY GENERATED DOCUMENT - DO NOT SCALE THIS PRINT