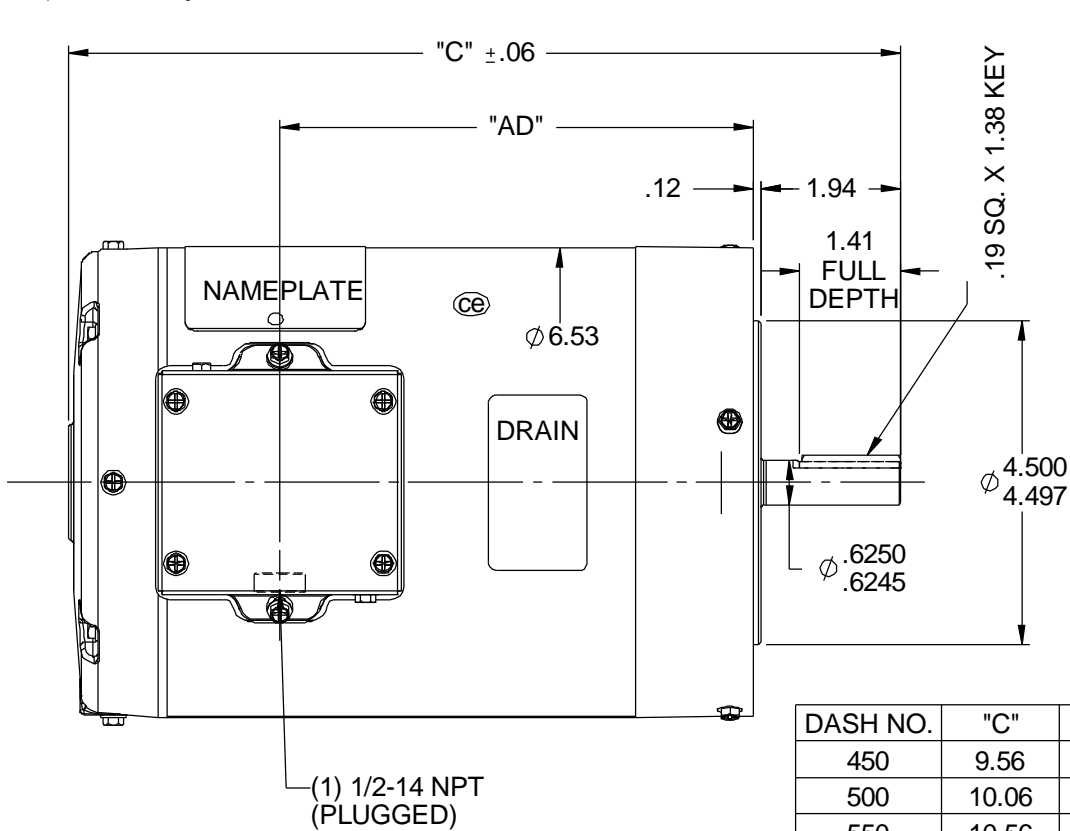
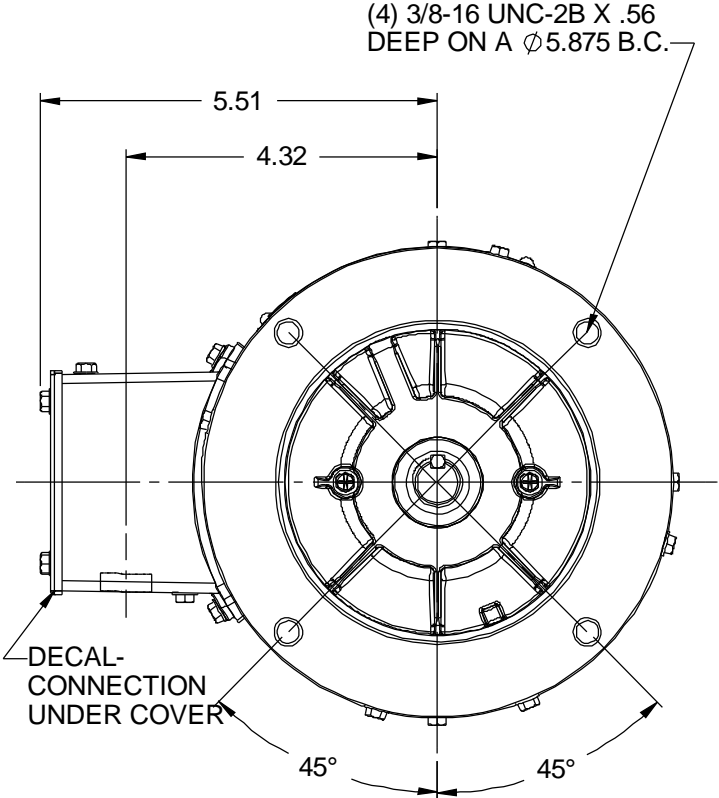


RBC PROPRIETARY AND CONFIDENTIAL INFORMATION
 This document is the property of REGAL BELOIT CORPORATION ("RBC") including its subsidiaries and divisions and contains proprietary information of RBC. This document is loaned on the express condition that neither it nor the information contained therein shall be disclosed to others without the express written consent of RBC, and that the information shall be used by the recipient only as approved expressly by RBC. This document shall be returned to RBC upon its request. This document may be subject to certain restrictions under U.S. export control laws and regulations.


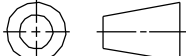


DASH NO.	"C"	"AD"
450	9.56	4.50
500	10.06	5.00
550	10.56	5.50
600	11.06	6.00
650	11.56	6.50
700	12.06	7.00
750	12.56	7.50
800	13.06	8.00
825	13.31	8.25



SPECIAL FEATURES
 SHAFT SEAL & V-RING
 DRAIN HOLES IN BOTH ENDBELLS & CONDUIT BOX
 GASKETS THROUGHOUT
 STAINLESS STEEL SHAFT, HARDWARE & NAMEPLATE

MAXIMUM FACE RUNOUT .004 T.I.R.
 MAXIMUM PILOT ECCENTRICITY .004 T.I.R.
 PERMISSIBLE SHAFT RUNOUT .002 T.I.R.

				TOLERANCES UNLESS SPECIFIED			DRAWN LST 10/3/08		
				DEC	INCHES		CHK		
				.X	±.1		APPR		
				.XX	±.03		SCALE 3:8		
				.XXX	±.005	TITLE OUTLINE 56C FRAME TENV "C" FACE	REF		
01	ADD DRAIN HOLE SCREW ECR-0034519	LST 7/22/2013	XX	.XXXX	±.0005	MAT'L WASHGUARD	FMF		
NO	REVISION	BY & DATE	CHK	ANG	± 1/2°	FINISH	PAGE	OF	
<div>THIRD ANGLE PROJECTION</div> 			RFP		PREV		SIZE	DRAWING NO	REV
			NETWORK FILE NAME 028888		A		028888	01	